

FULLY AUTOCLAVABLE

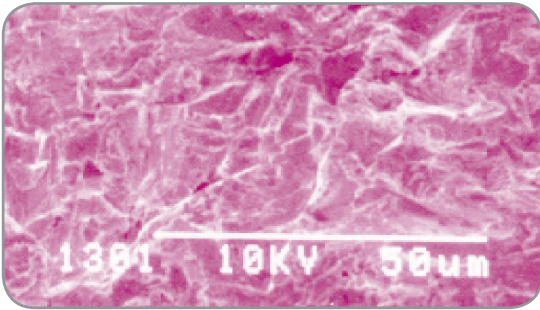


# MicroEtcher IIA™

## Intraoral Sandblaster

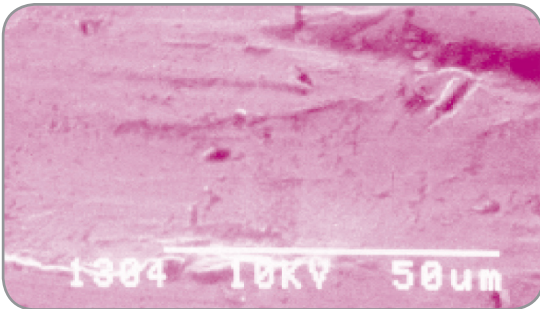
Sand Blasted Dental Alloy

800x



Bur Roughened Dental Alloy

800x



The introduction of the original Microetcher intraoral sandblaster changed chairside bonding forever. The advent of the Microetcher II allowed for precision microroughening and featured a removable and autoclavable nozzle. We've made major internal improvements to the Microetcher II in order to afford enhanced performance at lower pressure levels. The newly patented nozzle configuration is slimmer in profile allowing greater visibility during intraoral use, can rotate 360° and is interchangeable with the Microetcher II nozzle options. The Microetcher CD is designed to limit abrasive use, in order to minimize overspill in your operatory.

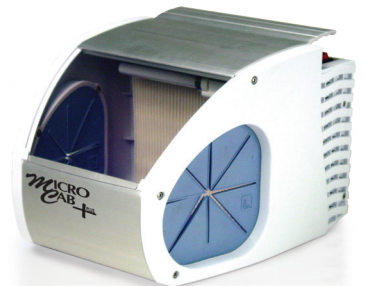
- Connects right to KaVo handpiece connector
- Fully autoclavable body and nozzle
- Compatible with Microetcher II nozzles
- Effective at pressures as low as 45psi
- 30% reduction in abrasive use
- Ergonomically designed nozzle to improve intraoral vision
- Improves bond strength by 400%
- Precise control for intraoral use
- Rapid bonding prep with failures greatly reduced
- Ideal for orthodontic and other appliances



## MacroCab+™

Self Contained Dust Collection System

- New LED lights with 30,000 hour life that save energy!
- A 50% higher flow fan for better suction power!
- New window design for a better fit - less powder leakage!
- Universal power supply 100-240, 50-60 Hz with UL, CE and TUV approvals



## MicroCab+™

Self Contained Dust Collection System

- Effectively contains dust and debris from etching or cleaning process
- Bright, fluorescent light
- Quiet filter and fan
- Small footprint
- Wall mountable

**ZD ZEST DENTAL SOLUTIONS™**

ZEST | DANVILLE MATERIALS | PERIOSCOPY

# ORDERING INFORMATION

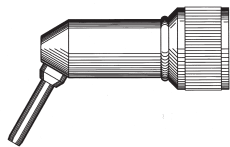
## INCREASE BOND STRENGTH UP TO 400% WITH THE MICROETCHER IIA, II AND ERC

### TYPICAL SURFACE ROUGHENING APPLICATIONS INCLUDE:

- Crown cementation with maximum bonding and fast, easycleaning for recementation.
- Intraoral porcelain and composite repair. Porcelain veneer bonding prep.
- Pit and fissure prep and removal of incipient decay.
- Amalgam bonding. Enamel bond enhancement. Acrylic facing replacement.
- Posts, inlays and onlays prep; occlusal adjustments.
- Metal crowns to check for precise fit and occlusion.
- Prepare attachments for Maryland bridges.
- Clean and prepare orthodontic brackets, bands.
- Relining and repair of metal dentures.

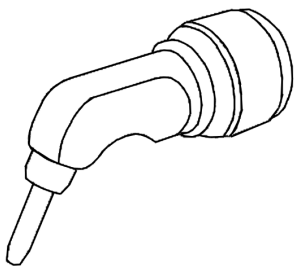
## MICROETCHER II NOZZLE COMPATIBLE WITH THE MICROETCHER IIA

Nozzle Angle: 60°  
Tip Size: .032  
Pit & Fissure Prep: .048

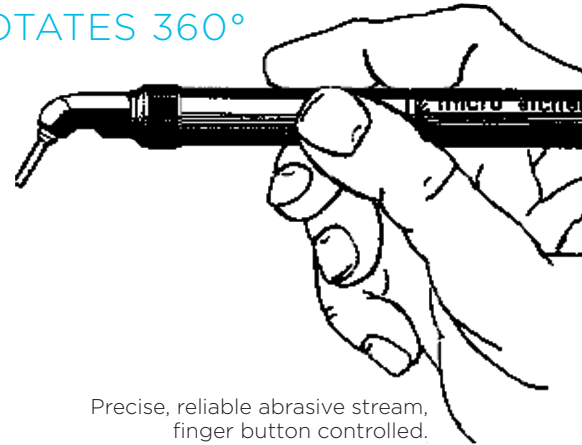


360° Rotatable Nozzle

## MICROETCHER IIA NOZZLE DESIGN WITH SLIMMER PROFILE ALLOWING GREATER INTRAORAL VISIBILITY.



ROTATES 360°



Precise, reliable abrasive stream,  
finger button controlled.

## MICROETCHERS & ACCESSORIES

### 22005-01 MICROETCHER IIA KIT

Microetcher IIA, 60° Nozzle, 9Ft. Air Line, Two Abrasive Jars, and Instructions.

Minimum Pressure of 45 PSI (2.5 Bar) Air Supply Is Required.

### NOZZLE OPTIONS:

201802-00 60° with .048 Tip

201865-00 .048 To 600 Slim Profile

### COMPATABLE WITH MICROETCHER II & IIA

186113 60° with .032 Tip

### 22000-03 MICROETCHER II

## ABRASIVES

### ALUMINUM OXIDE

15301	50 Micron, 1 Lb	White
15201	90 Micron, 1 Lb	Tan
16101	Glass Beads 90 Micron, 1 Lb	
14001	Orthoprophy SA-85 85 Micron	

### THE SAND-TRAP

22006 Package (15)

CONSULT OUR PRICE SHEET  
FOR PRICING AND ADDITIONAL  
PRODUCT LISTINGS